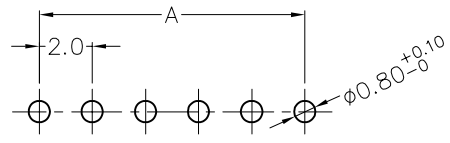
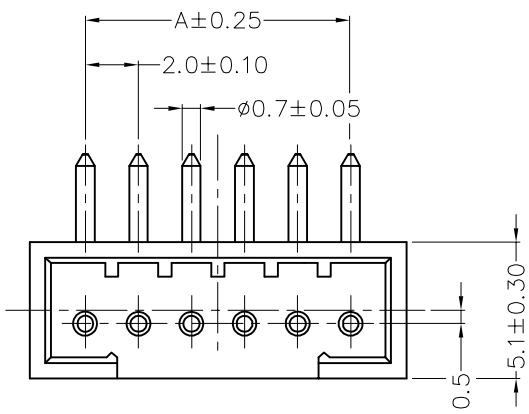


REV	LOCATIONS	DESCRIPTION	DATE	REVISER	APPD

A



Recommended P.C.Board Layout  
General tolerances: ±0.05

SPECIFICATIONS

**Electrical**  
 Current Rating: 1.0A  
 Voltage Rating: 300V AC(rms)  
 Contact Resistance: 12.5 mΩ Max.  
 Insulation Resistance: 5000 MΩ Min.  
 Withstanding Voltage: 1000V AC r.m.s  
 Temperature Range—Operating: -65°C~+125°C

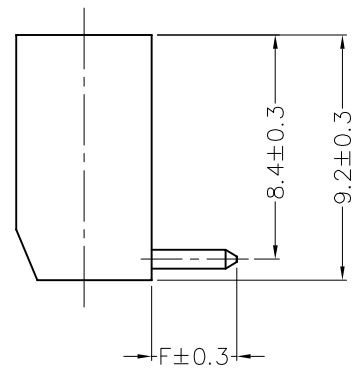
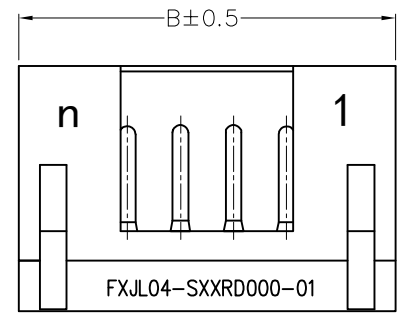
**Mechanical**  
 Durability: 500 Cycles  
 Vibration: Frequency 10Hz~2000Hz, Acceleration 147m/s<sup>2</sup>, Discontinuity 1μs Max.  
 Shock: Peak acceleration 980m/s<sup>2</sup>, Discontinuity 1μs Max.  
 Material and Plating  
 Housing: Thermoplastic (UL 94V-0) ,Green  
 Terminal: Brass/ Gold Plated

B

B

C

C



Circuits (n)	Part No.	Dimensions	
		A	B
2	FXJL04-S02RD000-01	2.00	6.20
3	FXJL04-S03RD000-01	4.00	8.20
4	FXJL04-S04RD000-01	6.00	10.20
5	FXJL04-S05RD000-01	8.00	12.20
6	FXJL04-S06RD000-01	10.00	14.20

D

D

E

E

Table 1

Part No.	Dimensions
	F
F1JL04-SXXRD000-01	3.3
F2JL04-SXXRD000-01	4.2
F3JL04-SXXRD000-01	5.5

Ordering Information

FXJL04 — S XX R D 000 — 01  
 1 2 3 4 5

1 | Category | 2 | Type | 3 | Circuits | 4 | Entry Angle | 5 | Wiring Type  
 FXJL04-JL04 | S-Socket | XX | R-90° Angle | D-Through Hole  
 (See Table 1)

F

F

<p>THIRD ANGLE PROJECTION</p>	GENERAL TOLERANCES (UNLESS SPECIFIED)		APPROVE BY LEO	DATE 28/FEB/22	PART NO. FXJL04-SXXRD000-01	ITEM NO. FXJL04	<p>Building Technology Cornerstone</p>	
	DESIGN UNITS METRIC(mm)	X. ±0.30	X.* ±5°	CHECKED BY GISELLE	DATE 28/FEB/22	TITLE JL4 Series Connector Pitch 2mm 90° Angle		
	SCALE 5:1	X.X ±0.20	X.X* ±2°	DRAWN BY MATT	DATE 28/FEB/22	REV 0		SHEET NO. 1/1
	SIZE A4	X.XX ±0.15	X.XX* ±1°	THIS DRAWING CONTAINS INFORMATION THAT IS PROPRIETARY TO TXGA INDUSTRIAL ELECTRONICS(S.Z)CO.,LTD AND SHOULD NOT BE USED WITHOUT WRITTEN PERMISSION				
	X.XXX ±0.10	X.XXX* ±0.5°						