

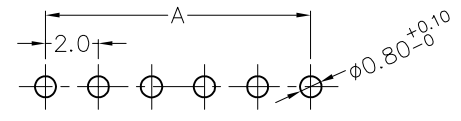
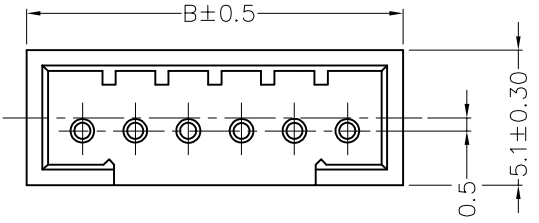
REV	LOCATIONS	DESCRIPTION	DATE	REVISER	APPD

SPECIFICATIONS

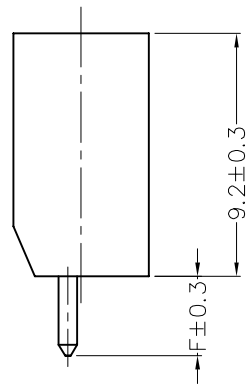
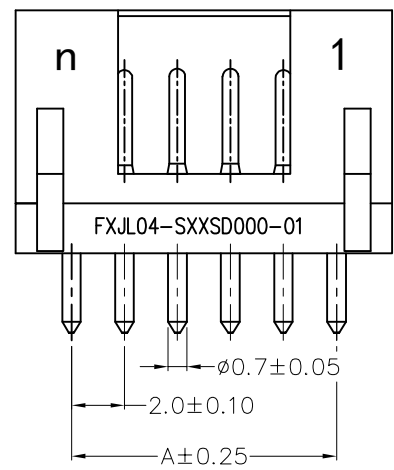
Electrical
 Current Rating: 1.0A
 Voltage Rating: 300V AC(rms)
 Contact Resistance: 12.5 mΩ Max.
 Insulation Resistance: 5000 MΩ Min.
 Withstanding Voltage: 1000V AC r.m.s
 Temperature Range—Operating: -65°C~+125°C

Mechanical
 Durability: 500 Cycles
 Vibration: Frequency 10Hz~2000Hz, Acceleration 147m/s², Discontinuity 1μs Max.
 Shock: Peak acceleration 980m/s², Discontinuity 1μs Max.

Material and Plating
 Housing: Thermoplastic (UL 94V-0)
 Terminal: Brass/ Gold Plated



Recommended P.C.Board Layout
 General tolerances: ±0.05



Circuits (n)	Part No.	Dimensions	
		A	B
2	FXJL04-S02SD000-01	2.00	6.20
3	FXJL04-S03SD000-01	4.00	8.20
4	FXJL04-S04SD000-01	6.00	10.20
5	FXJL04-S05SD000-01	8.00	12.20
6	FXJL04-S06SD000-01	10.00	14.20

Ordering Information

FXJL04 — S XX S D 000 — 01
 1 2 3 4 5

1 | Category | 2 | Type | 3 | Circuits | 4 | Entry Angle | 5 | Wiring Type
 FXJL04-JL04 | S-Socket | XX | S-180° Vertical | D-Through Hole
 (See Table 1)

Table 1

Part No.	Dimensions
	F
F1JL04-SXXSD000-01	3.0
F2JL04-SXXSD000-01	4.5
F3JL04-SXXSD000-01	5.5

<p>THIRD ANGLE PROJECTION</p>	GENERAL TOLERANCES (UNLESS SPECIFIED)		APPROVE BY LEO	DATE 28/FEB/22	PART NO. FXJL04-SXXSD000-01	ITEM NO. FXJL04	<p>Building Technology Cornerstone</p>	
	X. ±0.30	X.* ±5°	CHECKED BY GISELLE	DATE 28/FEB/22	TITLE JL4 Series Connector Pitch 2mm 180° Vertical			REV 0 SHEET NO. 1/1
	X.X ±0.20	X.X* ±2°	DRAWN BY MATT	DATE 28/FEB/22	THIS DRAWING CONTAINS INFORMATION THAT IS PROPRIETARY TO TXGA INDUSTRIAL ELECTRONICS(S.Z)CO.,LTD AND SHOULD NOT BE USED WITHOUT WRITTEN PERMISSION			
	X.XX ±0.15	X.XX* ±1°						
SCALE 5:1	SIZE A4	X.XXX ±0.10	X.XXX* ±0.5°					