

REV	LOCATIONS	DESCRIPTION	DATE	REVISER	APPD

SPECIFICATIONS

Electrical

- Current Rating: 13.0A
- Voltage Rating: 250V AC(rms)
- Contact Resistance: 3.8 mΩ Max.
- Insulation Resistance: 5000 MΩ Min.
- Withstanding Voltage: 1500V AC r.m.s
- Temperature Range-Operating: -55°C~+125°C

Mechanical

- Durability: 500 Cycles
- Vibration: Frequency 10Hz~2000Hz, Acceleration 147m/s², Discontinuity 1μs Max.
- Shock: Peak acceleration 980m/s², Discontinuity 1μs Max.

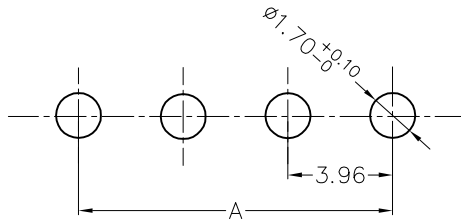
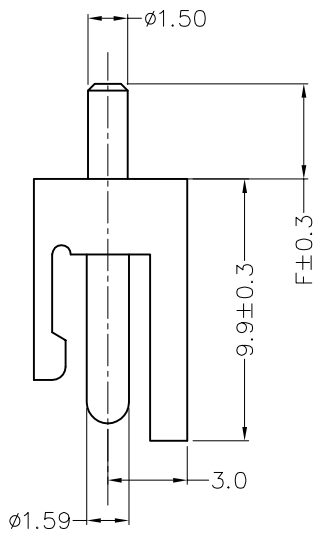
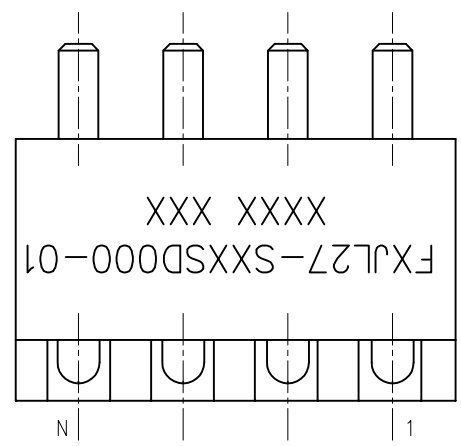
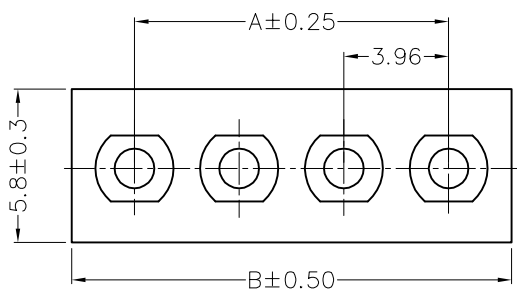
Material and Plating

- Housing: Thermoplastic (UL 94V-0) ,White
- Terminal: Brass/ Gold Plated

Ordering Information

FXJL27 — S XX S D 000 — 01
 1 2 3 4 5

1 Category FXJL27-JL27 (See Table 1)	2 Type S-Socket	3 Circuits XX	4 Entry Angle S-180° Vertical	5 Wiring Type D-Through Hole
--	----------------------	--------------------	------------------------------------	-----------------------------------



Recommended P.C.Board Layout
 General tolerances: ±0.05

Table 1

Part No.	Dimensions
	F
F1JL27-SXXSD000-01	3.60
F2JL27-SXXSD000-01	5.50
F3JL27-SXXSD000-01	8.00

Circuits (n)	Part No.	Dimensions		Circuits (n)	Part No.	Dimensions	
		A	B			A	B
2	FXJL27-S02SD000-01	3.96	8.72	12	FXJL27-S12SD000-01	43.56	48.32
3	FXJL27-S03SD000-01	7.92	12.68	13	FXJL27-S13SD000-01	47.52	52.28
4	FXJL27-S04SD000-01	11.88	16.64	14	FXJL27-S14SD000-01	51.48	56.24
5	FXJL27-S05SD000-01	15.84	20.60	15	FXJL27-S15SD000-01	55.44	60.20
6	FXJL27-S06SD000-01	19.80	24.56	16	FXJL27-S16SD000-01	59.40	64.16
7	FXJL27-S07SD000-01	23.76	28.52	17	FXJL27-S17SD000-01	63.36	68.12
8	FXJL27-S08SD000-01	27.72	32.48	18	FXJL27-S18SD000-01	67.32	72.08
9	FXJL27-S09SD000-01	31.68	36.44	19	FXJL27-S19SD000-01	71.28	76.04
10	FXJL27-S10SD000-01	35.64	40.40	20	FXJL27-S20SD000-01	75.24	80.00
11	FXJL27-S11SD000-01	39.60	44.36				

<p>THIRD ANGLE PROJECTION</p>	GENERAL TOLERANCES (UNLESS SPECIFIED)		APPROVE BY FRANK	DATE 26/JUL/21	PART NO. FXJL27-SXXSD000-01	ITEM NO. FXJL27	<p>Leader Of Industry</p>		
	X. ±0.30	X.* ±5°	CHECKED BY CHERRY	DATE 26/JUL/21	TITLE JL27 Series Connector Pitch 3.96mm 180° Vertical			REV 0	SHEET NO. 1/1
	X.X ±0.20	X.X* ±2°	DRAWN BY ANHO	DATE 26/JUL/21	THIS DRAWING CONTAINS INFORMATION THAT IS PROPRIETARY TO TXGA INDUSTRIAL ELECTRONICS(S.Z)CO.,LTD AND SHOULD NOT BE USED WITHOUT WRITTEN PERMISSION				